

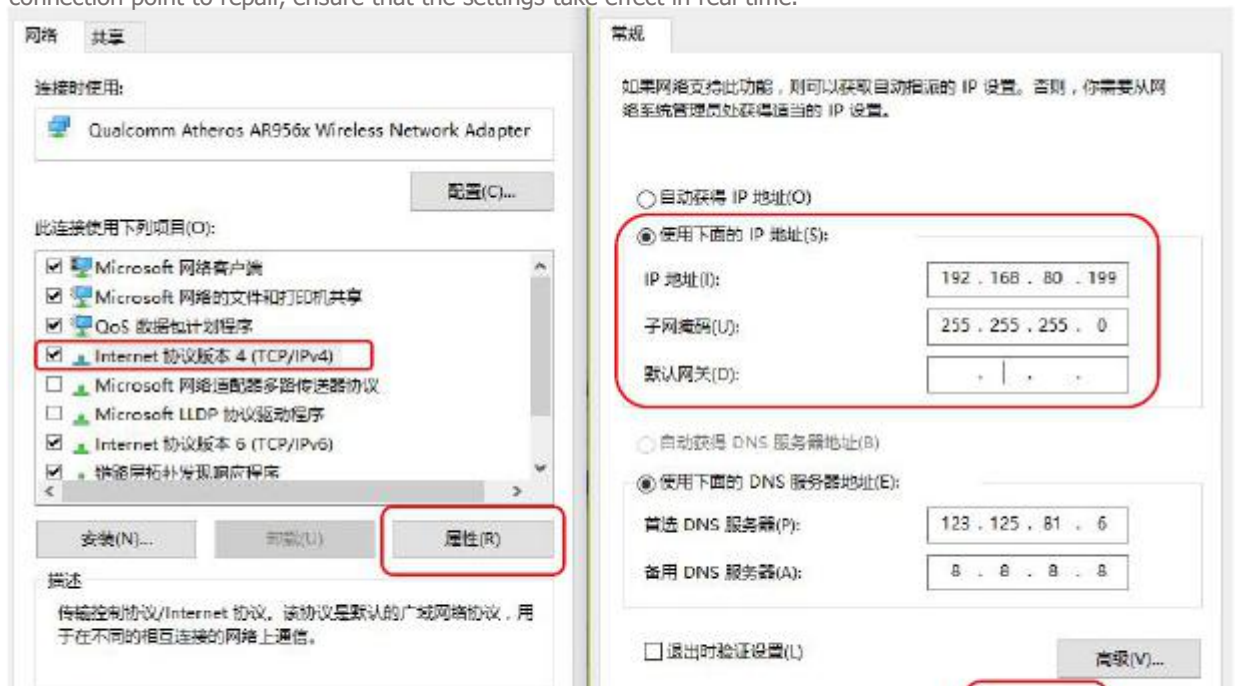
The WEB interface setting of EBIT E9 miner is simple and friendly. You can easily set up the miner by following the steps below. The factory IP of EBIT is usually 192.168.80.140. If your machine is faulty, don't worry, we will provide you with a 6-month warranty for the whole machine, 12-month warranty for control boards. Please be patient and read the following steps

1) The latest batch of EBIT miner default address is 192.168.80.140. The hardware connection can not be opened normally. The miner and the computer IP are not in the same network segment and need to be set.

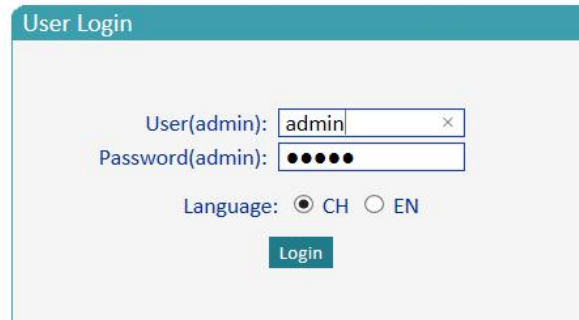
1: Open your router configuration, set the router's LAN port to 192.168.80.1, the general router defaults to 192.168.1.1 or 192.168.0.1, if it is 192.168.80.1, there is no need to modify it. After the modification, restart the router and connect the mining rig to the router with the network cable.



2: Set the IP of your computer's wired network card to 192.168.80.199, subnet mask 255.255.255.0, and leave the gateway blank. First, point the network neighbor to find the local connection, select the Internet protocol point properties, open the window settings, click OK and then OK, and finally right-click on the local connection point to repair, ensuring that the settings take effect in real time.

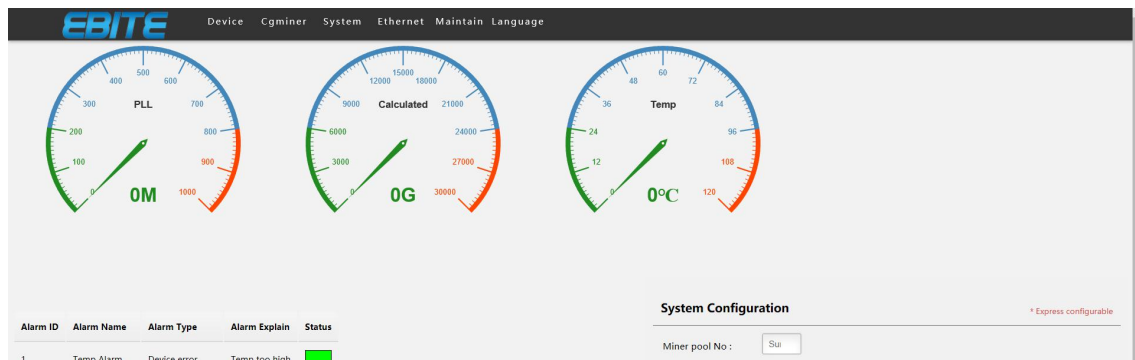


2) After the route restart is complete, open your browser and enter the IP address on your mining fan. The default is 192.168.80.140, then press Enter. Enter the default user account of the miner admin, the password is also admin by default, then click login to log in.

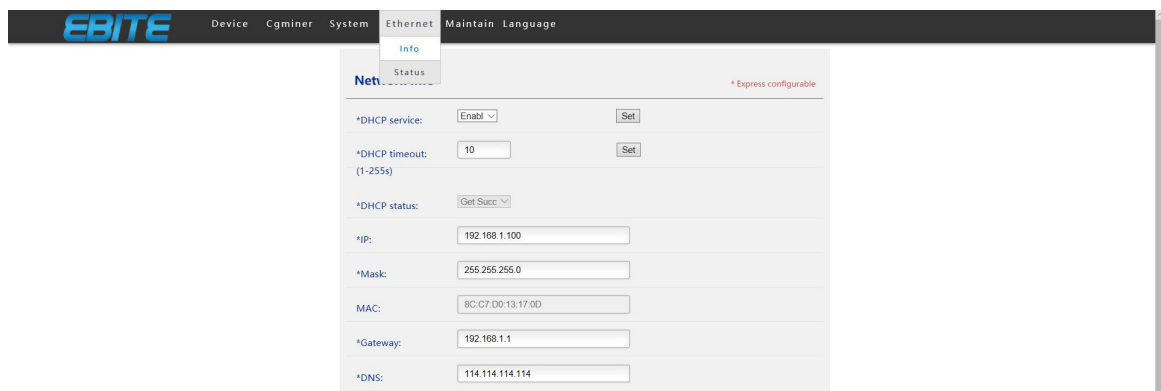


The image shows a 'User Login' web form. It has a teal header with the text 'User Login'. Below the header, there are two input fields: 'User(admin):' with the text 'admin' and a clear button (X), and 'Password(admin):' with six black dots. Below these fields, there is a 'Language:' section with two radio buttons: 'CH' (selected) and 'EN'. At the bottom center, there is a teal 'Login' button.

3) After logging in to the mining machine, click on the device information ---- device status, you can see the device frequency, computing power, temperature, and the system configuration is displayed on the page (intuitive reaction pool task no response times, power warning, temperature Warning threshold, device shutdown temperature threshold, frequency setting, etc.).

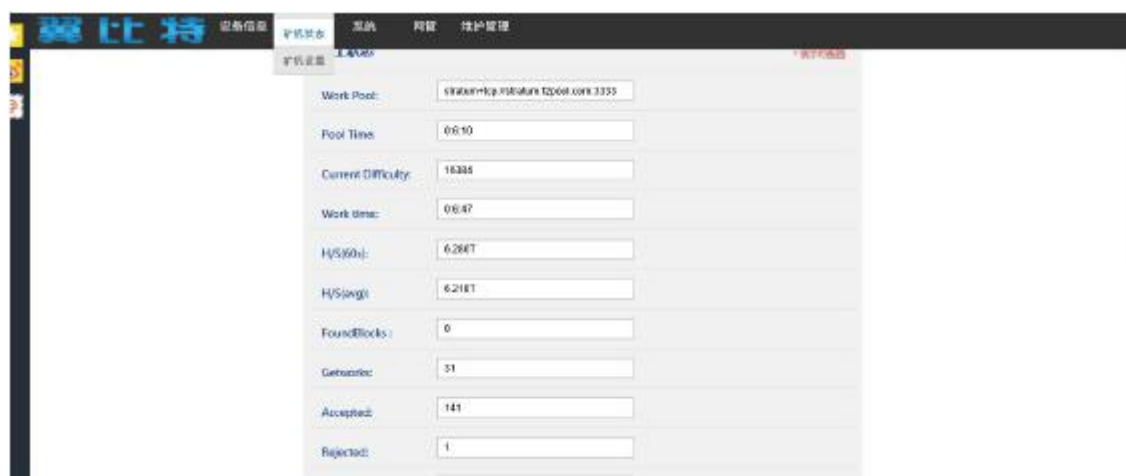
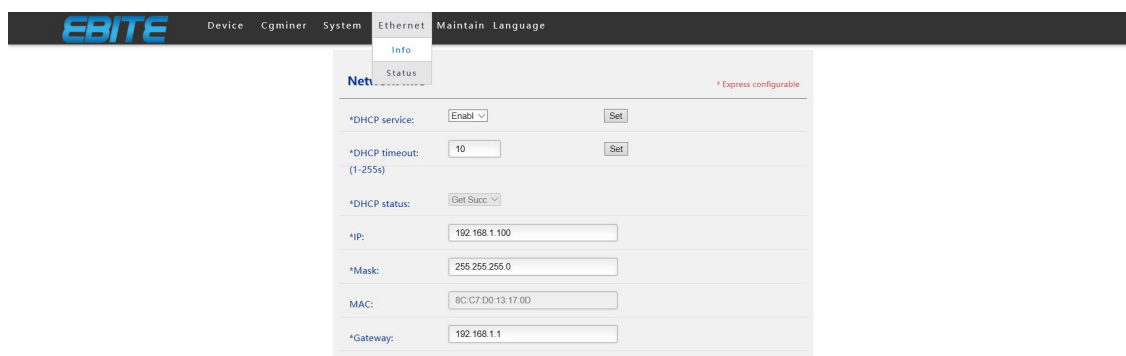


4) Click the network management button to enter the network management information configuration page. If there are more than two wing bits, please modify the IP address to other addresses. Be sure to click the Settings button after making changes.

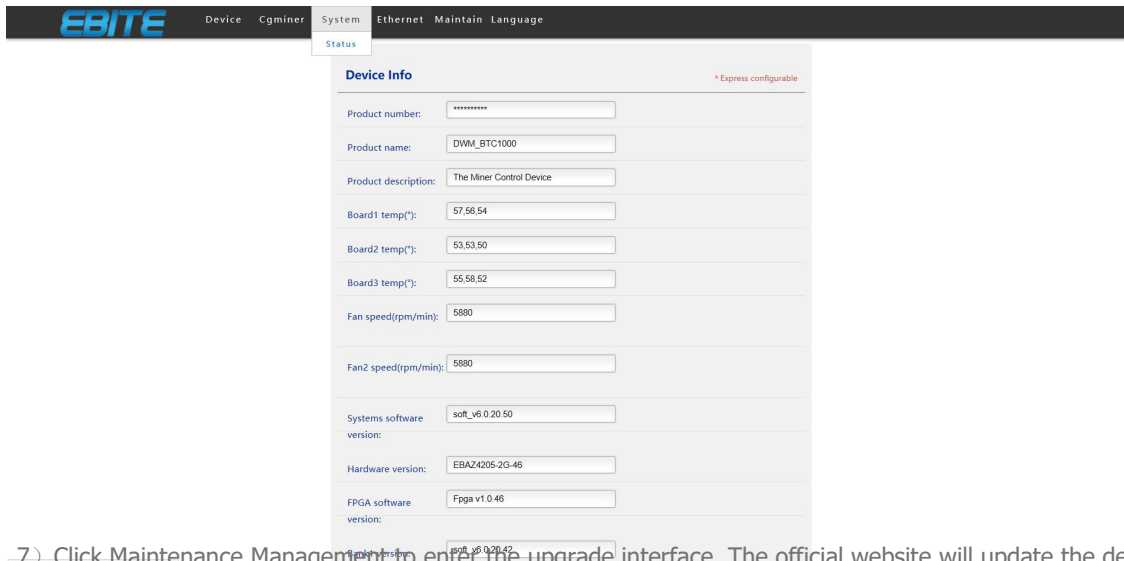


The image shows the 'Network' configuration page in the EBITE dashboard. The navigation bar is the same as in the previous image, but the 'Ethernet' menu item is selected, and a sub-menu is open with 'Info' and 'Status' options. The 'Status' option is selected. Below the navigation bar, there is a 'Net' section with a '* Express configurable' note. The section contains several configuration fields: '*DHCP service:' (dropdown menu set to 'Enabl'), '*DHCP timeout:' (input field '10'), '*DHCP status:' (dropdown menu set to 'Get Succ'), '*IP:' (input field '192.168.1.100'), '*Mask:' (input field '255.255.255.0'), 'MAC:' (input field '8C:C7:00:13:17:0D'), '*Gateway:' (input field '192.168.1.1'), and '*DNS:' (input field '114.114.114.114'). Each field has a 'Set' button next to it.

5) Click the miner and click on the miner settings to enter the miner configuration page. Mine Pool 1 information is configured with f2pool, stratum+tcp://stratum.f2pool.com:3333 is the mine pool, some networks will block 3333 ports, f2pool can be replaced with 8888 or 25, wxseric is my miner name, password is The password (the name of the miner should correspond to the name of the miner in the mine pool, and the password can be filled in as needed). The mining pool is divided into three groups, which can be filled in three groups. If the first group of mines is hung, it will automatically switch to the second group. Similarly, the second group of mines will automatically switch to the third group. After the configuration is completed, mining can be carried out. Click on the setting to make the mining pool effective. Enter the miner state to observe whether the mining machine is working normally.



6) Click System. Go to the System Status page, where you can get the device board temperature, system hardware, software version number, and more.



7) Click Maintenance Management to enter the upgrade interface. The official website will update the device firmware from time to time. At that time, the mine friends can extract and download the upgrade device to improve the performance of the device. Note: Failure of the firmware upgrade will cause permanent damage to the system. Please perform firmware upgrade by the manufacturer or under the guidance of the manufacturer. The upgrade file path cannot contain Chinese. Entering the restart interface, the system restart will restart all units.

